



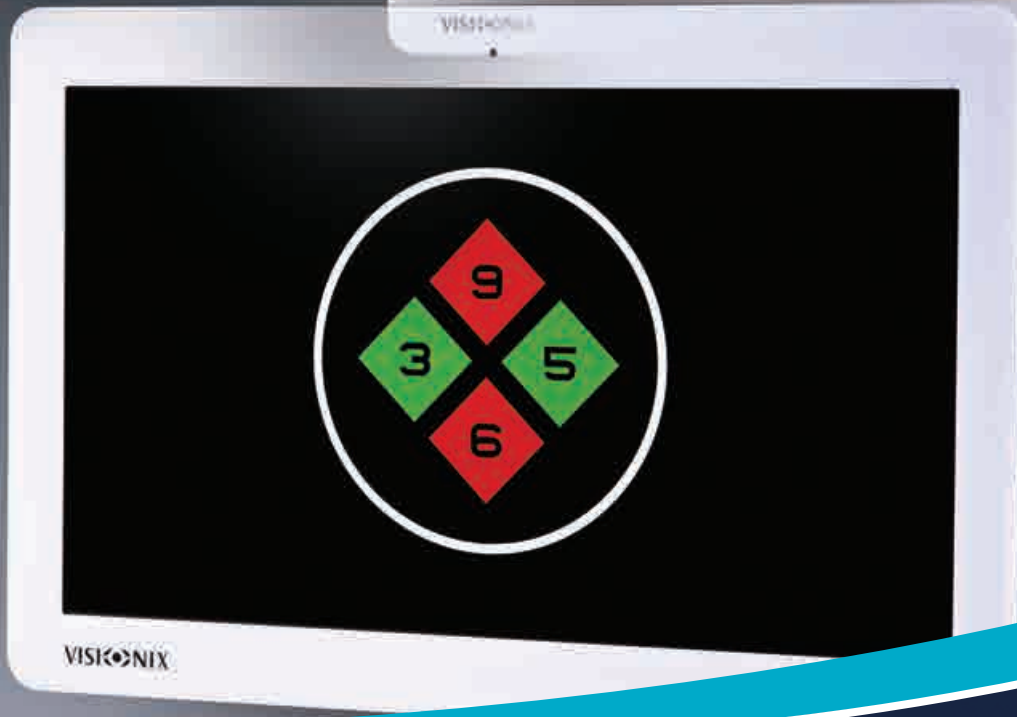
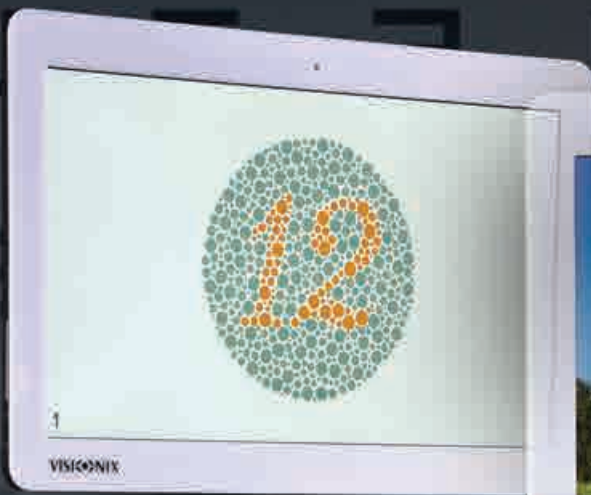
**Totaalleverancier
van lasers en medische
technologieën**



méer dan lasers ...

Laservision Instruments BV
+31 (0) 529 428 000

www.laservision.nl
info@laservision.nl

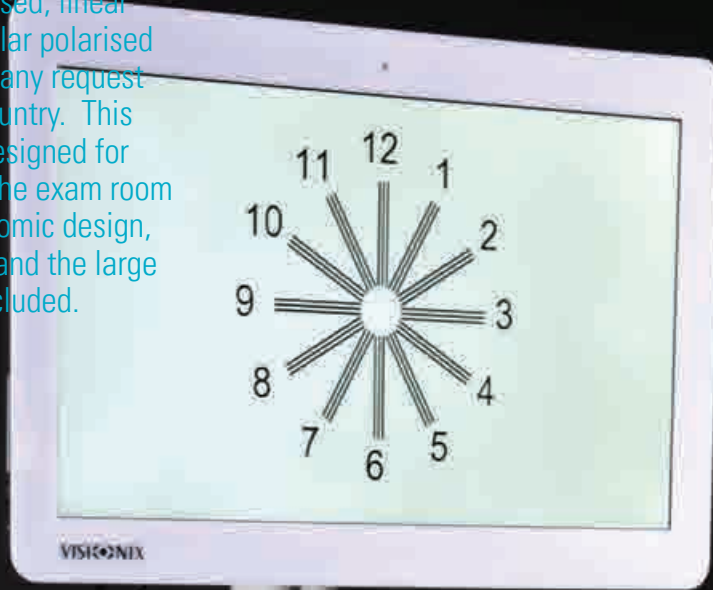


VX22

Chart Display

CIRCULAR, LINEAR AND NON
POLARIZED CHART DISPLAYS

The new LCD display, with its 23.6" size is available in 3 versions non polarised, linear polarised and circular polarised thus adaptable for any request and use of each country. This screen has been designed for optimal results in the exam room thanks to its ergonomic design, streamlined style, and the large number of tests included.



Main features

- Screen size 23,6"
- Amsler grid for AMD detection
- Paskal 3D option
- ETDRS chart with automatic scoring
- Random chart to avoid memorisation
- Anti aliasing to avoid pixel effect
- Radio remote control or Acuitab app
- Webservice control via tablet with IOS android feedback

Remote radio control

The wireless remote control communicates via radio frequencies. As a result, it has an increased range and allows the practitioner to avoid having to point the remote control at the screen to change tests.

Control your chart display with the Acuitab App*

Control your chart display with the Acuitab App* The "tablet" application allows two-way communication between the display and the tablet (the tablet orders the test and the display sends information about the displayed test back to the tablet).

*ref. 8230-1040-01 tablet not included).

Possible control from any tablet (via web browser).

Minimum resolution requested 1280x800.



SERIES OF OPTOTYPES & TESTS

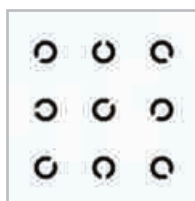
COMMON TESTS FOR THE 3 CHARTS DISPLAYS



Letter



Digit



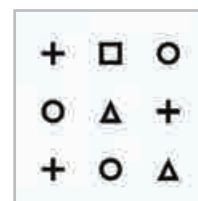
Landolts rings



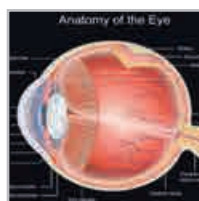
Snellen



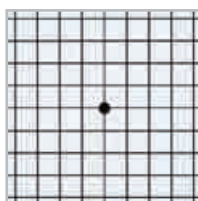
Kids



Geometric



Learning Pic



Amsler



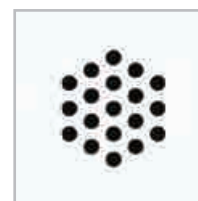
Sheridan



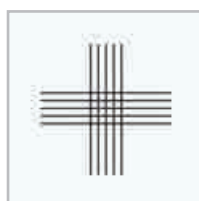
ETDRS



Astigmatism



Dot chart



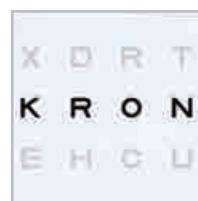
Jackson Cross



Ishihara



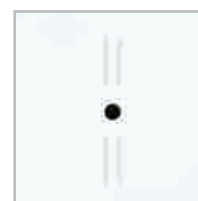
Kids Movie



Polarized balance



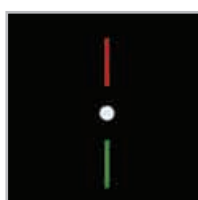
Red green balance



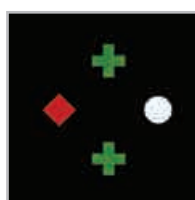
Stereoscopy



Mallet test



Fusion



Worth tests



Schober test



Pelli Robson



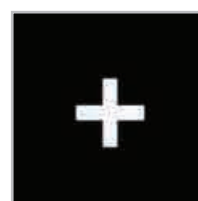
Regan test



Dazzle halo



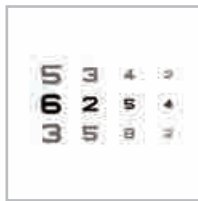
Dazzle driver



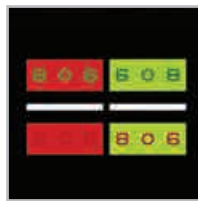
Dazzle recup

OPTOTYPES & TESTS FOR POLARIZED CHART DISPLAYS VX22-LP AND VX22-CP

TESTS AVAILABLE FOR THE POLARIZED CHART DISPLAYS



Pola binocular balance



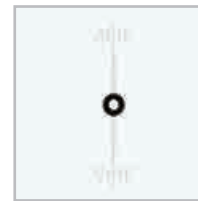
Binocular duochrome polarized



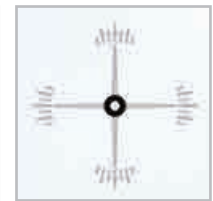
Binocular duochrome polarized



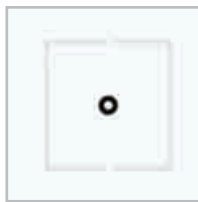
MKH 01 Cross



MKH02 indicator



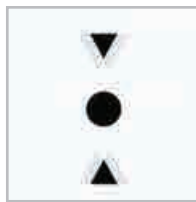
MKH 03 double indicator



MKH 03 coincidence test



MKH 05 Stereo test with triangle



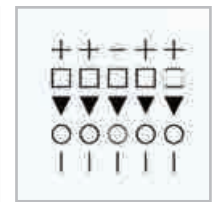
MKH 06 reduce stereo test with triangle



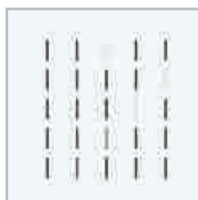
MKH 07 stereo balance test



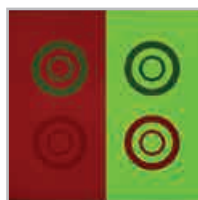
MKH08 reduced stereo balance test



MKH09 differential test



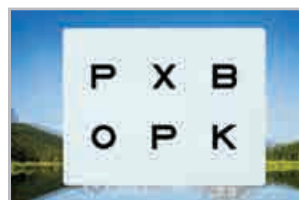
MKH09 differential test B



MKH 12 Cowen test



Test 3D



Binocular immersive vision

For these tests it is necessary to use the polarized frame supplied with the chart displays





VX22-CP top-of-the-range circular polarized screen

Thanks to its circular polarised screen, the tests useful for binocular and stereoscopic vision can perfectly block out one eye in order to test the other regardless of the patient's position.



VX22-LP linear polarized screen

This device features a linear polarisation to test binocular and stereoscopic vision allowing a perfect dissociation of the right eye/left eye. This offers the ability to proceed with many other tests with optimal quality for the exam of bi-ocular, binocular, and stereoscopic vision.



VX22-NP entry-range non polarized screen

This product offers a wide range of tests : charts and colour vision test. With full features and highly ergonomic, this unit is as simple to use as a chart

FULLY COMPATIBLE

The chart display can be synchronised with the Visionix Binocular dynamic eye exam Eye Refract™ and Visionix automatic phoropter VX65 through optional cables or WiFi. Once synchronised changing the charts is possible thanks to the VX65 remote panel or Eye Refract™ tablet.



READING DISTANCE

The reading distance can be selected between 2 and 8 meters, or in mirror mode for small spaces. The chart size can then be reduced or enlarged depending on the reading distance to maintain the same visual angle.



VX22

Chart Display

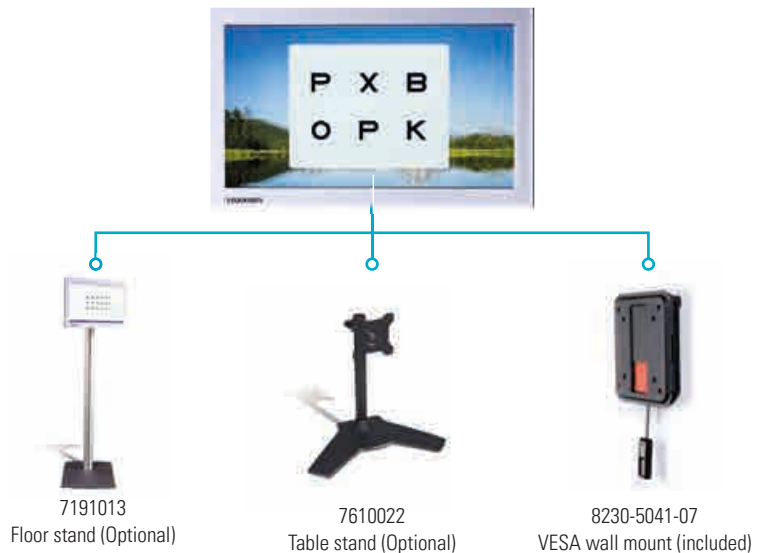


| | |
|--|--------------------|
| Height | 380 mm (14.96 inc) |
| Width | 585 mm (23.03 inc) |
| Depth | 46 mm (1.81 inc) |
| Weight | 3,8 kg (6.61 lbs) |
| Versions available | Ref |
| VX22-NP * Non polarized | 8240-0022-00 |
| VX22-LP * Linear polarized | 8241-0022-40 |
| VX22-CP * Circular polarized | 8241-0022-31 |

TECHNICAL SPECIFICATIONS

| | |
|---|--|
| • Screen size | 23,6 inch |
| • Resolution | 1920x1080 |
| • Luminance | 250 Cd/m ² |
| • Reading distance | 2 to 8 meters (78 to 315 inch) |
| • Visual acuity | 0,1 to 2,0 |
| • Power supply | 100-240V CA- 50/60 Hz – 1.3A |
| • Built-in speaker | |
| • Interface | RS 232, IR, 4 Usb, VGA, Hdmi, Lan |
| • Built-in Led for external fixation point | |
| • Possible media support for advertising purposes | ASF, WMV, WMA, OGG, MOV, RM, RA, RAM, MP4, MPEG, AVI, VOB, MPG |

Stands and Mounts



Accessories

- Batteries for remote control dongle
- USB stick
- Radio remote control
- Power supply cable and transformer
- Matching tests for child tests
- Red / green frame
- Circular polarized frame



De Grift 20
7711 EJ, Nieuwleusen

www.laservision.nl | info@laservision.nl | 0529 - 428000 | [@laservision_instruments](https://www.instagram.com/laservision_instruments)