



**Totaalleverancier
van lasers en medische
technologieën**



Laservision Instruments BV
+31 (0) 529 428 000

www.laservision.nl
info@laservision.nl

A more objective predictor
of glaucoma progression.

Ocular Response Analyzer® G3
with **Corneal Hysteresis**



Reichert
TECHNOLOGIES
AMETEK
reichert.com

Reichert® Ocular Response Analyzer® G3.

Make a more confident glaucoma risk assessment, with Corneal Hysteresis.

Ocular Response Analyzer® (ORA) is the only tonometer that measures **Corneal Hysteresis** (CH), a superior predictor of glaucoma progression. Corneal Hysteresis is an indication of the biomechanical properties of the cornea differing from thickness or topography, which are geometrical attributes.

“CH measurements were significantly associated with risk of glaucoma progression. Eyes with lower CH had faster rates of visual field loss than those with higher CH.”¹

In addition to Corneal Hysteresis, Ocular Response Analyzer provides **Corneal Compensated Intraocular Pressure** (IOPcc), a better indication of the true pressure, proven to be less influenced by corneal properties than Goldmann or other methods of tonometry.²

Effective January 1, 2015, **CPT® Code 92145**, was published specifically for the Corneal Hysteresis measurement provided by Ocular Response Analyzer.



Ocular Response Analyzer® G3



Corneal Hysteresis (CH): An indispensable tool in the glaucoma decision making process.

Corneal Hysteresis has consistently shown to be predictive of, or strongly associated with, glaucoma progression, and more powerfully so, than key indicators such as IOP and CCT, making it an indispensable tool in the glaucoma decision making process.

Glaucoma is the second leading cause of irreversible blindness in the world. Despite the fact that there are a variety of well-known risk factors, it can be difficult to diagnose. Beyond diagnosing, predicting an individual patient's rate of future glaucoma progression is often extremely challenging for clinicians.

The **Ocular Hypertension Treatment Study (OHTS)**, and similar studies, have brought to light the relevance of central corneal thickness (CCT) in glaucoma. Numerous studies utilizing the Ocular Response Analyzer have confirmed the importance of the cornea in glaucoma decision making and, in fact, demonstrated that Corneal Hysteresis is of far greater significance than CCT.

“A comparison between the effects of CH and CCT revealed that although CH explained 17.4% of the variation in the rates of progression, CCT explained only 5.2%.”¹



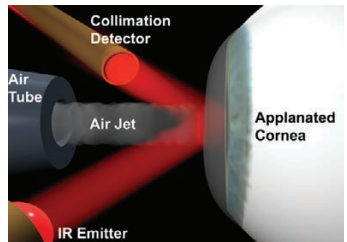
Corneal Compensated IOP (IOPcc): Less affected by corneal properties.

Ocular Response Analyzer takes corneal biomechanical properties into consideration, providing Corneal Compensated IOP (IOPcc). The patented bi-directional applanation system enables the measurement of Corneal Hysteresis and IOPcc.

Intraocular pressure (IOP) is the only modifiable risk factor for glaucoma. As such, accurate measurement of IOP is critical for proper diagnosis and management. However, it is widely recognized that Goldmann and other tonometers are influenced by corneal properties. While corneal thickness has been accepted as an important factor contributing to the accuracy of IOP measurements, it has been shown that attempting to adjust IOP values by means of a corneal thickness correction formula does not add any value to the glaucoma decision making process. It is biomechanics, not thickness, that predominantly influence the accuracy of IOP measurements.

Corneal biomechanical properties can affect the accuracy of measured IOP values by as much as 17 mmHg in normal eyes³ and more than 20 mmHg in eyes with corneal pathology.⁴ **IOPcc effectively eliminates these influences on the pressure measurement.**

“Correction nomograms that adjust GAT IOP based solely on CCT are neither valid nor useful in individual patients.”⁵



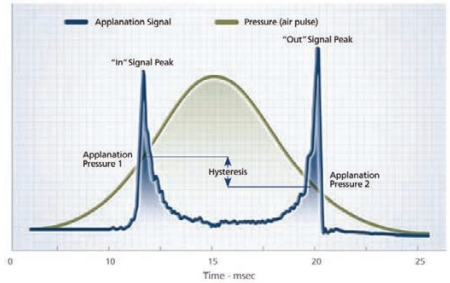
Bi-directional applanation system.

Compensated IOP (IOPcc) - a pressure measurement that is less affected by the cornea than other methods of tonometry. IOPcc is patented technology, exclusive to Reichert.

- IOPcc is less affected by corneal properties than Goldmann²
- IOPcc is a better indicator of glaucomatous damage than Goldmann tonometry⁶

How is Corneal Hysteresis measured?

Corneal Hysteresis is the difference in the inward and outward pressure values obtained during the patented dynamic bi-directional applanation process utilized by the Ocular Response Analyzer. It is a characterization of the cornea's ability to absorb and dissipate energy, which is a function of visco-elastic biomechanical properties of the cornea.



Unparalleled user experience.

Measurements could not be quicker or simpler with Ocular Response Analyzer G3. A single touch of the intuitive user interface initiates a fully automated alignment and measurement, simultaneously displaying Corneal Compensated IOP (IOPcc), Corneal Hysteresis (CH), Goldmann correlated IOP (IOPg), and Waveform Score (WS).



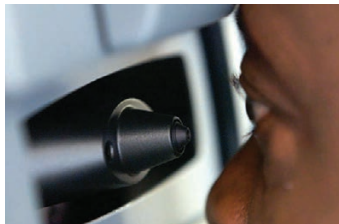
Confidence, reliability and efficiency.

The advanced, patent-pending Waveform Score feature, combined with Reichert's unique intelligent averaging technique, enhances measurement reliability and repeatability so operators can be confident in the accuracy of the measurement results. Operators can easily access all functions through the integrated touch screen display, including export of patient data for effortless EMR integration. Delegate your tonometry and Corneal Hysteresis measurements to trained technicians with ease.



Non-contact saves time and money.

Because the Ocular Response Analyzer G3 measurement is rapid and non-contact the use of topical anesthesia and/or fluorescein drops is not required, saving time and money. In addition, the risk of cross contamination is greatly reduced. The need for time-consuming sterilization of tonometer prisms, costly replacement of prisms, or use of expensive disposables is eliminated.



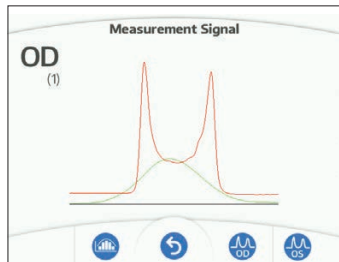
Unique design with patients in mind.

Ocular Response Analyzer G3 is designed with no chinrest, which saves time by simplifying patient positioning. This unique design also makes patients more comfortable and less intimidated by not feeling confined in a chinrest.



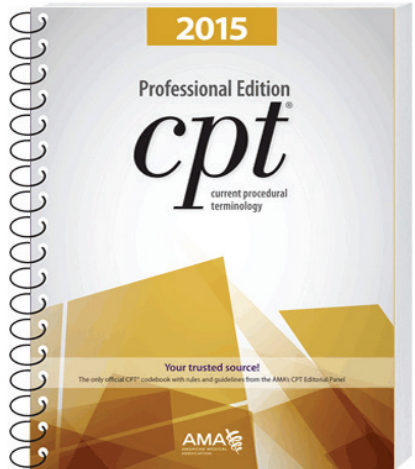
Patented air pulse, maximum comfort.

Reichert's automatic, non-linear pressure ramp customizes the air pulse, in real time, for each eye being measured. This patented feature enables the softest possible air pulse, ensuring maximum patient comfort. In a pediatric study conducted on children between the ages of 4-18 years old found, *"Overall cooperation was much better with ORA (89.8%) than with Goldmann applanation (78.7%), and all the children we questioned preferred this (ORA) technique."*⁷



CPT® Code 92145 published for Corneal Hysteresis.

A new CPT code, 92145, has been published specifically for the Corneal Hysteresis measurement provided by the Reichert® Ocular Response Analyzer®. In the 2015 CPT handbook, a new, permanent, Category I CPT code, 92145 (Corneal hysteresis determination, by air impulse stimulation, unilateral or bilateral, with interpretation and report), replaces the prior temporary, Category III CPT code, 0181T. The new code took effect January 1, 2015. For more information regarding CPT Code 92145, please consult your medical billing specialist.



Made in the USA.

Ocular Response Analyzer G3 is proudly made in the USA at our state-of-the-art world headquarters in Buffalo, New York.



Decades of Glaucoma Care Innovation.

In 1959 Dr. Bernard "Bernie" Grolman flipped on the radio during his morning commute to American Optical, now Reichert Technologies, and heard a public service announcement about the prevalence of glaucoma. Being familiar with tonometry due to his industry experience he thought, "What if I could create an instrument that eye doctors could use to help diagnose a leading cause of blindness, without touching the cornea?"

"The need for a non-contact tonometer was so obvious," said Grolman, who would spend the next 10 years of his life designing and testing the original AO Non-Contact Tonometer.

Using an air pulse with electro-optical detection to provide Goldmann-like measurements, the non-contact tonometer enabled user-friendly measurement of IOP without the need for topical anesthesia or corneal contact.

Unveiled in 1971, the NCT I was the buzz of the entire industry. American Optical, now Reichert Technologies, continued to innovate on the concept, introducing generation after generation of non-contact tonometer.

Fast forward to 2001, when David Luce, Ph.D., developed an advanced process capable of extracting information about corneal biomechanics from the NCT measurement signal. The Corneal Hysteresis measurement was born and the instrument that became known as the Ocular Response Analyzer was made available for sale in 2005. At long last, the topic of corneal biomechanics moved out of the laboratory and into the clinic, spawning entire new sections on conference programs and launching the subject to the forefront of the ophthalmic publication landscape.

Reichert remains the world-leader in tonometry products and has become the pioneering innovator behind Corneal Hysteresis.



Dr. Bernard "Bernie" Grolman, NCT I historical display.



David Luce, Ph.D.





Ocular Response Analyzer G3 Specifications

Catalog Number	16170
Dimensions	26.7 W x 50.2 H x 35.6 D cm (10.5 x 19.8 x 14 in.)
Weight	10.4 kg (23 lbs)
Voltage	100/240 VAC
Frequency	50/60 Hz
Measurement Range	7 - 60 mmHg (ISO 8612 tonometer standard)
Communication Port	RS-232

1 - Medeiros FA, Meira-Freitas D, Lisboa R, Kuang TM, Zangwill LM, Weinreb RN. Corneal hysteresis as a risk factor for glaucoma progression: a prospective longitudinal study. *Ophthalmology*. 2013 Aug;120(8):1533-40.

2 - Felipe A. Medeiros, MD and Robert N. Weinreb, MD. Evaluation of the Influence of Corneal Biomechanical Properties on Intraocular Pressure Measurements Using the Ocular Response Analyzer. *J Glaucoma* 2006;15:364-370.

3 - Liu J, Roberts CJ. Influence of corneal biomechanical properties on intraocular pressure measurement: quantitative analysis. *J Cataract Refract Surg*. 2005 Jan;31(1):146-55.

4 - Herbert E. Kaufman, MD. Pressure Measurement: Which Tonometer? *Symposium on Glaucoma*. Vol 11, number 2.

5 - Robert N. Weinreb, James D. Brandt, David Garway-Heath and Felipe Medeiros World Glaucoma Association on Intraocular Pressure; Consensus Series 4; May 5, 2007, Pg 18.

6 - Aashish Anand, MD, Carlos Gustavo De Moraes, MD, Christopher C Teng, MD, Celso Tello, MD, Jeffrey M Liebmann, MD Robert Ritch, MD. Lower Corneal Hysteresis Predicts Laterality in Asymmetric Open Angle Glaucoma, *IOVS Papers in Press*. Published on June 23, 2010 as Manuscript iovs.10-5580.

7 - Morita T, Shoji N, Kamiya K, Hagishima M, Fujimura F, Shimizu K. Intraocular pressure measured by dynamic contour tonometer and ocular response analyzer in normal tension glaucoma. *Graefes Arch Clin Exp Ophthalmol* DOI 10.1007/s00417-009-1169-4.

Reichert, Reichert Technologies, and Ocular Response Analyzer are registered trademarks of Reichert, Inc. AMETEK is a registered trademark of AMETEK, Inc. CPT is a registered trademark of the American Medical Association.

CE0120



De Grift 20
7711 EJ, Nieuwleusen

www.laservision.nl | info@laservision.nl | 0529 - 428000 | [@laservision_instruments](https://www.instagram.com/laservision_instruments)