



**Totaalleverancier
van lasers en medische
technologieën**

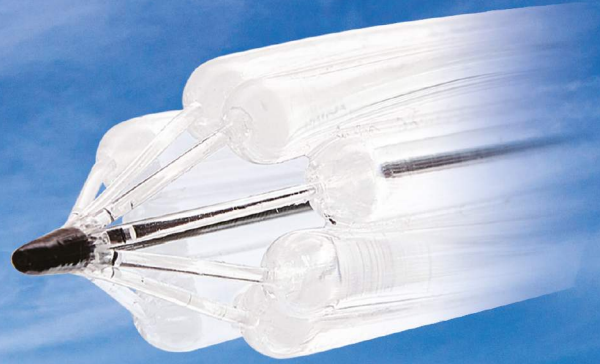


Laservision Instruments BV
+31 (0) 529 428 000

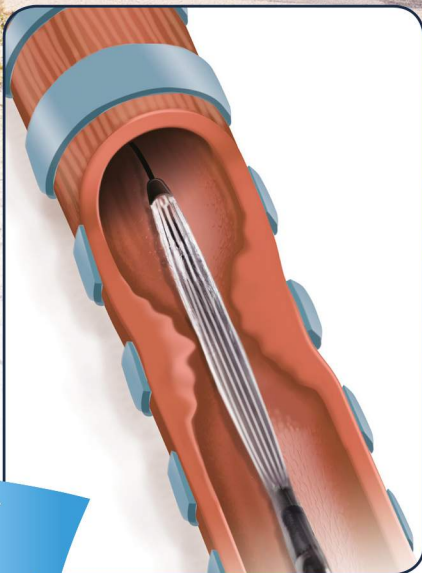
www.laservision.nl
info@laservision.nl

Trachealator

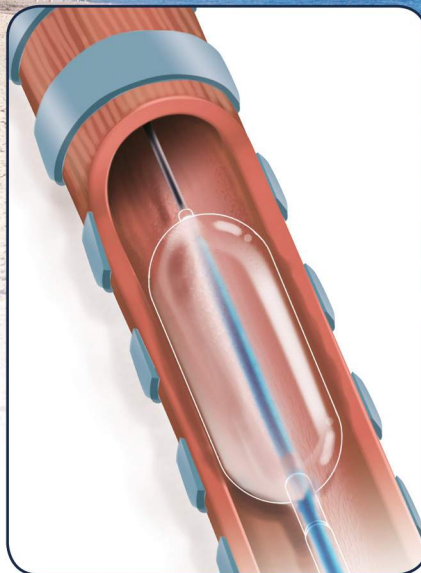
Non-occlusive Airway Dilation Balloon



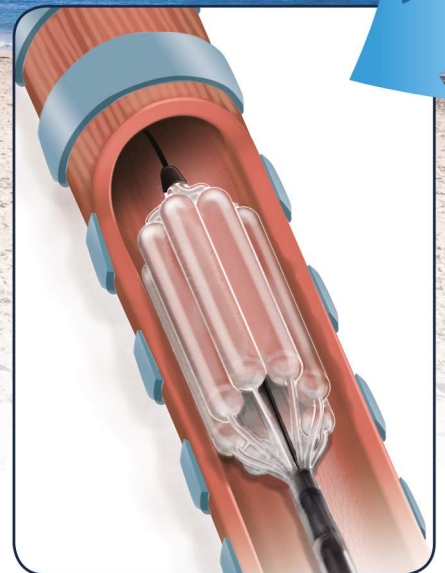
Innovative balloon construction allows continuous ventilation during inflation



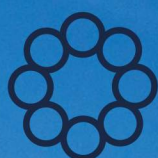
Catheter is placed across stenosis while in folded condition



Traditional dilatation balloon catheters completely occlude the airway



The novel Trachealator balloon provides an open channel for ventilation



Ventilate while inflated – non-occlusive design



High Pressure



Easy re-folding



Extra length allows insertion through rigid bronchoscope



Markers for visual and radiographic positioning



Semi-compliant (sizing ability)

Technical information, sizes and order codes

| Order code | Balloon Diameter (mm) | Balloon Length (mm) | NP (atm) | RBP (atm) | Working length (mm) | Shaft diameter (mm) | Guidewire compatibility | Package unit |
|-------------|-----------------------|---------------------|----------|-----------|---------------------|---------------------|-------------------------|--------------|
| +TRD1-06030 | 6 | 30 | 6 | 14 | 650 | 2.3 | 0.018" | 1 pc |
| TRD1-07030 | 7 | 30 | 6 | 14 | 650 | 2.3 | 0.018" | 1 pc |
| TRD1-08030 | 8 | 30 | 6 | 14 | 650 | 2.3 | 0.018" | 1 pc |
| TRD1-09030 | 9 | 30 | 6 | 14 | 650 | 2.3 | 0.018" | 1 pc |
| TRD1-10030 | 10 | 30 | 6 | 14 | 650 | 2.3 | 0.018" | 1 pc |
| TRD1-12040 | 12 | 40 | 6 | 14 | 650 | 2.3 | 0.018" | 1 pc |
| TRD1-14540 | 14.5 | 40 | 6 | 14 | 650 | 3.5 | 0.035" | 1 pc |
| TRD1-16040 | 16 | 40 | 6 | 14 | 650 | 3.5 | 0.035" | 1 pc |
| TRD1-18040 | 18 | 40 | 6 | 14 | 650 | 3.5 | 0.035" | 1 pc |

NP - Nominal Pressure

RBP - Rated Burst Pressure

⁺On special request

De Grift 20
7711 EJ, Nieuwleusen

www.laservision.nl | info@laservision.nl | 0529 - 428000 | [@laservision_instruments](https://www.instagram.com/laservision_instruments)