



**Totaalleverancier  
van lasers en medische  
technologieën**



Laservision Instruments BV  
+31 (0) 529 428 000

[www.laservision.nl](http://www.laservision.nl)  
[info@laservision.nl](mailto:info@laservision.nl)



**HEINE** QUALITY  
MADE IN GERMANY

## ➤ **HEINE mini 3000® Series**

Pocket Diagnostic Instruments – with outstanding illumination



# HEINE mini 3000 Series – Maximum Quality, Minimum Size

---

The HEINE mini 3000 series is the successful combination of the high quality features of full-size HEINE instruments and the convenience of pocket sized design.

## HANDY AND ERGONOMIC

Compact and ergonomic design guarantees a comfortable operation for the most reliable diagnosis in any examination situation.

## A QUALITY PRODUCT WITH A MODERN DESIGN

Special plastics provide maximum strength and durability in a lightweight and modern design. Maximum quality and durability with minimal dimensions.

## QUALITY OPTICS AND ILLUMINATION

The interaction between high quality optics and illumination is crucial in an instrument's performance and reliability. The optics produce distortion-free and brilliant images of the whole area under examination. The illumination system renders structures and colours accurately and naturally. The mini 3000 series provides the perfect balance of HEINE quality optics and illumination accuracy.

## Two illumination options. One compact series of instruments without equal: HEINE mini 3000

---

### HEINE LED<sup>HQ</sup>: SETTING A NEW STANDARD

### HEINE XHL TECHNOLOGY: STILL A MILESTONE

HEINE XHL Xenon-Halogen Technology has set the standard for the evaluation of new light technologies. It offers the perfect colour rendering that health care professionals have examined the eye with and depended

on for decades. But now there is another illumination option that meets this standard: our new LED<sup>HQ</sup> technology. Now you have a choice with no compromises: tried and true XHL, or LED in HEINE Quality.

### HEINE LED<sup>HQ</sup>: LIGHT THAT SHOWS COLOURS AS THEY ARE

LED light sources impress with a long lifetime and energy efficiency. There is no need to ever exchange the LED. The quality of LED illumination however can vary greatly compared to XHL illumination. With exclusive HEINE LED<sup>HQ</sup> technology you can enjoy all benefits of the familiar LED technology with no compromise in illumination quality.

### BRIGHT AND HOMOGENEOUS ILLUMINATION

### FAITHFUL COLOUR RENDERING INDEX

### CONSISTENT LIGHT OUTPUT AND PERFORMANCE THROUGHOUT THE WHOLE WORKING LIFE



# HEINE mini 3000 F.O. OTOSCOPE

Modern pocket otoscope, compact and powerful.



mini 3000 Otoscope with direct illumination, see page 6.

mini 3000 F.O. Otoscope with LED or XHL illumination	2.5V XHL	2.5V LED
with mini 3000 battery handle (incl. batteries), 5 of both 2.5 and 4 mm dia. AllSpec disposable tips	D-001.70.110	D-008.70.110

For additional ordering information, please contact your HEINE Distributor or visit us at [www.heine.com](http://www.heine.com)



# HEINE mini 3000 OPHTHALMOSCOPE

Compact Pocket Ophthalmoscope with best colour rendering at minimal dimensions.



Corrective lenses:  
Range of 18 lenses  
from -20 D to +20 D

mini 3000 apertures



Fixation star, large spot, small spot, hemispherical spot, red-free filter

High-quality optics provides sharp, clear images

XHL or LED<sup>HQ</sup> illumination for a brilliant image and accurate colour rendering

**LED<sup>HQ</sup>**  
LED NOW IN HEINE QUALITY.

Attachment clip with integrated on/off switch. Switches off automatically when returned to the pocket. 20,000 ON/OFF switch cycles guaranteed.

One-hand operation of the instrument for more flexibility during examinations

Two power supply options:  
replaceable AA batteries or rechargeable option in combination with the mini NT table charger.



▶ To upgrade to a rechargeable instrument with mini NT table charger, please see page 7.

mini 3000 Ophthalmoscope with LED or XHL illumination	2.5V XHL	2.5V LED
with mini 3000 battery handle (incl. batteries)	D-001.71.120	D-008.71.120

For additional ordering information, please contact your HEINE Distributor or visit us at [www.heine.com](http://www.heine.com)

# HEINE mini 3000 DERMATOSCOPE

Compact pocket dermatoscope with homogeneous illumination and authentic colour rendering.

High quality colour-neutral optic system with achromatic lenses provides distortion-free edge-to-edge images of the whole area under examination with 10x magnification

XHL or LED<sup>HQ</sup> illumination for a brilliant image and accurate colour rendering

**LED<sup>HQ</sup>**  
LED NOW IN HEINE QUALITY.

Attachment clip with integrated on/off switch. Switches off automatically when returned to the pocket. 20,000 ON/OFF switch cycles guaranteed.

One-hand operation of the instrument for more flexibility during examinations

Two power supply options: replaceable AA batteries or rechargeable options in combination with the mini NT table charger.

► To upgrade to a rechargeable instrument with mini NT table charger, please see page 7.



mini 3000 Dermatoscope with LED or XHL illumination	2.5V XHL	2.5V LED
with mini 3000 battery handle (incl. batteries) with contact plate and 10ml dermatoscopy oil	D-001.78.107	D-008.78.107

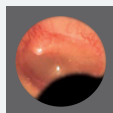
For additional ordering information, please contact your HEINE Distributor or visit us at [www.heine.com](http://www.heine.com)



## Other products of our mini 3000 series:

### mini 3000 OTOSCOPE [01]

- ✦ Compact otoscope with direct XHL illumination



Swivelling viewing window with 3x magnification built into instrument



Black inner instrument head

Bright and homogeneous illumination with true colour rendering

D-001.70.210

**mini 3000 Otoscope**  
with mini 3000 battery handle, 5 of both 2.5 and 4mm dia. AllSpec disposable tips

### mini 3000 COMBI LAMP [02]

- ✦ Compact, all-purpose pocket light and tongue depressor holder all in one.
- ✦ Optimal, bright illumination for the pupillary reflex test.
- ✦ Can be used with standard wooden tongue depressors and HEINE disposable blades.

### mini 3000 TONGUE-BLADE HOLDER [03]

- ✦ Tongue depressor holder with blade ejector for HEINE disposable tongue-blades.
- ✦ Optimal illumination of the oral cavity and the pharynx.
- ✦ Finger-tip pressure releases the blade. No need to touch the blade after use.
- ✦ Solid metal construction. Durable and tough.

D-001.76.120

**mini 3000 Combi Lamp**  
with mini 3000 battery handle (incl. batteries) with 5 disposable blades

D-001.74.118

**mini 3000 Tongue-Blade Holder**  
with mini 3000 battery handle (incl. batteries) with 5 disposable blades



**mini 3000 CLIP LAMP [04]/  
mini-c CLIP LAMP [05]**

- Compact instrument, AA batteries [04] and very compact instrument, AAA batteries [05] for all purpose illumination.
- Optimal, bright illumination for the pupillary reflex test.
- Optional Audiology Ear Light: For the adjustment of a hearing aid, the clip lamp can be equipped with an ear light.

**EAR LIGHT  
for mini 3000 CLIP LAMP/  
mini-c CLIP LAMP [06]**

- For otoplasty.
- The ear light is used to ensure that hearing aids fit correctly.

**mini NT TABLE CHARGER for  
2 mini 3000 HANDLES [07]**

- Provides stable storage of the instruments. Space saving.
- Two independent charging wells allow two mini handles to be charged at the same time.
- Quick recharge in 4 hours.
- Cannot be overcharged. Charger switches off automatically when the battery is fully charged.
- Charge Status Indicator: Light pulses from the illuminated charging wells indicating the charging mode. Continuous light indicates that the charging process has been completed.

**mini 3000 RECHARGEABLE  
HANDLE [08]**

- High quality handle: Unique chrome-finished upper section/refined plastic. Shockproof, sturdy, non-slip.
- Ergonomic elegant form fits well in the hand.
- Threaded connector is made of metal to prevent wear.
- Integrated on/off switch. Secure. Switches off automatically when returned to the pocket. 20,000 switch cycles guaranteed.

**D-001.73.131**

**mini 3000 Clip Lamp**  
with mini 3000 battery handle  
(incl. batteries)

**D-001.73.109**

**mini-c Clip Lamp**  
(incl. batteries)

**D-000.73.105**

**Ear Light for mini 3000 Clip  
Lamp / mini-c Clip Lamp**  
6 pieces in blister pack

**X-001.99.484**

**mini NT Table Charger**  
single

**D-001.79.022**

**mini 3000 Rechargeable  
Handle**  
with rechargeable battery  
NiMH 2Z and bottom insert

mini 3000 battery systems can be upgraded to a 2.5V rechargeable system with the **mini NT Charger Set** consisting of: mini NT table charger, 2 rechargeable batteries NiMH 2Z, 2 bottom inserts for mini 3000 rechargeable handle

For additional ordering information, please contact your HEINE Distributor or visit us at [heine.com](http://heine.com)

**X-001.99.485**





De Grift 20  
7711 EJ, Nieuwleusen

[www.laservision.nl](http://www.laservision.nl) | [info@laservision.nl](mailto:info@laservision.nl) | 0529 - 428000 | [@laservision\\_instruments](https://www.instagram.com/laservision_instruments)