

BETTER
illumination.
SUPERIOR
colour rendering.
GREATER
magnification.





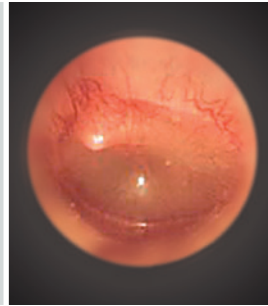
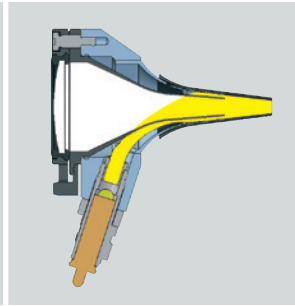
HEINE Otoscopes



	BETA 400 F.O.	BETA 200 F.O.	K180 F.O.	mini 3000 F.O.	BETA 100	K100	mini 3000
Housing construction	Metal	Metal	Poly-carbonate	Poly-carbonate	Metal	Poly-carbonate	Poly-carbonate
Viewing window	Glass	Glass	Acrylic	Acrylic	Glass	Acrylic	Acrylic
Magnification	4.2x	3x	3x	3x	3x	3x	3x
Illumination	F.O. XHL or LED ^{HQ}	F.O. XHL or LED ^{HQ}	F.O. XHL	F.O. XHL or LED ^{HQ}	Direct XHL	Direct XHL	Direct XHL
Instrument size	Professional	Professional	Professional	Compact	Professional	Professional	Compact
Handle options / power sources	<ul style="list-style-type: none"> • Battery handle • USB rechargeable handle • Rechargeable handle with table charger • EN 200 / EN 200-1 	<ul style="list-style-type: none"> • Battery handle • USB rechargeable handle • Rechargeable handle with table charger • EN 200 / EN 200-1 	<ul style="list-style-type: none"> • Battery handle • USB rechargeable handle • Rechargeable handle with table charger • EN 200 / EN 200-1 	<ul style="list-style-type: none"> • Battery handle • Rechargeable handle with table charger 	<ul style="list-style-type: none"> • Battery handle • USB rechargeable handle • Rechargeable handle with table charger • EN 200 / EN 200-1 	<ul style="list-style-type: none"> • Battery handle • USB rechargeable handle • Rechargeable handle with table charger • EN 200 / EN 200-1 	<ul style="list-style-type: none"> • Battery handle • Rechargeable handle with table charger
Tips / Specula	<ul style="list-style-type: none"> • Reusable tips • AllSpec disposable tips 	<ul style="list-style-type: none"> • Reusable tips • AllSpec disposable tips 	<ul style="list-style-type: none"> • Reusable tips • AllSpec disposable tips 	<ul style="list-style-type: none"> • Reusable tips • AllSpec disposable tips 	<ul style="list-style-type: none"> • Reusable tips • AllSpec disposable tips with tip adaptor • UniSpec disposable specula 	<ul style="list-style-type: none"> • Reusable tips • AllSpec disposable tips with tip adaptor • UniSpec disposable specula 	<ul style="list-style-type: none"> • Reusable tips • AllSpec disposable tips
Pneumatic testing of tympanum mobility	Insufflation port available	Insufflation port available	Insufflation port available	Insufflation port available, Insufflation port required	Insufflation port available	Insufflation port available	–
Catalogue page	011	013	015	016	020	022	023



High-quality Fiber Optics (F.O.) provide a homogeneous, reflex-free illumination.



HEINE BETA® 400 LED F.O. Otoscope

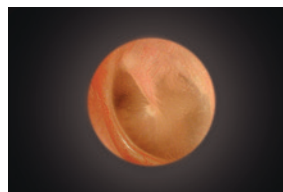
4.2x magnification with LED^{HQ} illumination

LED^{HQ}
LED NOW IN HEINE QUALITY.

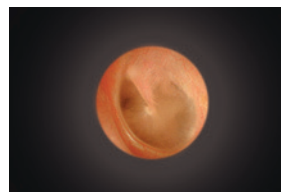


The otoscope has been designed with an all metal housing and scratch resistant glass lenses which guarantee a lifetime of maintenance-free use. LED with virtually unlimited hours of working life. No need to ever replace bulbs. Maintenance-free for a lifetime.

- ∴ **Exclusive 4.2x magnification.** More detail of anatomical structures and easy recognition of foreign bodies.
- ∴ **Exceptional depth of field.** Provides sharp spatial images in a convenient working range.
- ∴ **Large field of view.** Gives the necessary overview and perfect orientation during examinations.
- ∴ **Multi-coated precision optics.** Offer high resolution and distortion free images.
- ∴ **Fiber Optic Illumination.** Ensures homogeneous, very bright illumination and an unobstructed view of the ear canal and tympanum.
- ∴ **There's LED. And there's LED^{HQ}.** HEINE has set a new standard which maintains that only the best is good enough, from the selection of materials to processing, from light intensity to dimmability, and from thermal management to a colour rendering index as high as possible. **That's what we call LED in HEINE Quality – or LED^{HQ}.**
- ∴ **Special optical interface to precisely integrate the LED illumination with the optical system** to ensure bright, homogeneous light during examinations.
- ∴ **Patented, unique, stepless dimming** from 3% to 100% with practical one-finger operation.
- ∴ **One hand operation.** The unique patented design allows the permanently attached optical system to be flipped open and out of the way, enabling instrumentation and ease of cleaning.
- ∴ **Integrated insufflation port** offers tympanic mobility testing without air leakage. See order information accessories on page 019.
- ∴ **Full functionality of the BETA 400 LED is guaranteed with BETA Rechargeable Handles and the EN 200 / EN 200-1 Wall Transformers.**



BETA 400 LED F.O. Otoscope with
4.2x magnification



Conventional Otoscope

- ∴ **Also available with XHL Xenon Halogen illumination.** Bright illumination and authentic colour rendering; for other technical specifications see BETA 400 LED F.O. Otoscope.



HEINE BETA 400 Diagnostic Sets/Kits

With XHL or LED^{HQ} illumination



Set includes: BETA 400 F.O. Otoscope,

1 set (4 pcs.) of reusable tips, 5 of both AllSpec disposable tips 2.5 and 4 mm Ø, spare bulb for XHL version, hard case.

	2.5V XHL	3.5V XHL	LED
BETA battery handle	B-143.10.118		
★ BETA4 USB rechargeable handle with USB cord and plug-in power supply		B-143.27.388	B-143.28.388
BETA4 NT rechargeable handle with NT4 table charger		B-143.23.420	B-143.24.420



Without case

NEW! Kit includes: BETA 400 F.O. Otoscope,

5 of both AllSpec disposable tips 2.5 and 4 mm Ø.

	2.5V XHL	LED
BETA battery handle	B-010.10.118	
BETA4 USB rechargeable handle with USB cord and plug-in power supply		B-010.28.388
BETA4 NT rechargeable handle with NT4 table charger		B-010.24.420



Set includes: BETA 400 F.O. Otoscope and BETA 200 Ophthalmoscope,

1 set (4 pcs.) of reusable tips, 5 of both AllSpec disposable tips 2.5 and 4 mm Ø, one spare bulb each for XHL version, hard case.

	2.5V XHL	3.5V XHL	LED
BETA battery handle	A-153.10.118		
BETA4 USB rechargeable handle with USB cord and plug-in power supply		A-153.27.388	A-153.28.388

Also available as a kit with EN 200 Wall Transformer (page 145)



Without case

Kit includes: BETA 400 F.O. Otoscope and BETA 200 Ophthalmoscope,

1 set (4 pcs.) of reusable tips, 5 of both AllSpec disposable tips 2.5 and 4 mm Ø, one spare bulb each for XHL version.

	3.5V XHL	LED
2x BETA4 NT rechargeable handle with NT4 table charger	A-153.23.422	A-153.24.422

∴ For further information on the HEINE BETA 200 Ophthalmoscope, please see page 045.



HEINE BETA® 200 LED F.O. Otoscope

Sharpest images, perfect colour rendering and brightness in LED^{HQ}



The otoscope has been designed with an all metal housing and scratch resistant glass lenses which guarantee a lifetime of maintenance-free use. LED with virtually unlimited hours of working life. No need to ever replace bulbs. Maintenance-free for a lifetime.

- ∴ **3x magnification.** The multi-coated glass viewing window offers high resolution and distortion-free images.
- ∴ **Fiber Optic Illumination.** Ensures homogeneous, very bright illumination and an unobstructed view of the ear canal and tympanum.
- ∴ **There's LED. And there's LED^{HQ}.** HEINE has set a new standard which maintains that only the best is good enough, from the selection of materials to processing, from light intensity to dimmability, and from thermal management to a colour rendering index as high as possible. **That's what we call LED in HEINE Quality – or LED^{HQ}.**
- ∴ **Special optical interface to precisely integrate the LED illumination with the optical system** to ensure bright, homogeneous light during examinations.
- ∴ **Patented, unique, stepless dimming** from 3% to 100% with practical one-finger operation.
- ∴ **Viewing window is permanently attached**, and swivels for instrument use and complete cleaning of the instrument head.
- ∴ **Integrated insufflation port** offers tympanic mobility testing without air leakage. See order information accessories on page 019.
- ∴ **Full functionality of the BETA 200 LED is guaranteed with BETA Rechargeable Handles and the EN 200 / EN 200-1 Wall Transformers.**

- ∴ **Also available with XHL Xenon Halogen illumination.** Bright illumination and authentic colour rendering; for other technical specifications see BETA 200 LED F.O. Otoscope.

HEINE BETA 200 Diagnostic Sets/Kits

With XHL or LED^{HQ} illumination



Set includes: BETA 200 F.O. Otoscope,

1 set (4 pcs.) of reusable tips, 5 of both AllSpec disposable tips 2.5 and 4 mm Ø, spare bulb for XHL version, hard case.



	2.5V XHL	3.5V XHL	LED
BETA battery handle	B-141.10.118		
BETA4 USB rechargeable handle with USB cord and plug-in power supply		B-141.27.388	B-141.28.388
BETA4 NT rechargeable handle with NT4 table charger		B-141.23.420	B-141.24.420



Without case

NEW! Kit includes: BETA 200 F.O. Otoscope,

5 of both AllSpec disposable tips 2.5 and 4 mm Ø.

	2.5V XHL	LED
BETA battery handle	B-011.10.118	
BETA4 USB rechargeable handle with USB cord and plug-in power supply		B-011.28.388
BETA4 NT rechargeable handle with NT4 table charger		B-011.24.420



HEINE BETA 200 Diagnostic Sets / Kits

With XHL or LED^{HQ} illumination



Set includes: BETA 200 F.O. Otoscope and BETA 200 Ophthalmoscope,
 1 set (4 pcs.) of reusable tips, 5 of both AllSpec disposable tips 2.5 and 4 mm Ø,
 one spare bulb each for XHL version, hard case.

	2.5V XHL	3.5V XHL	LED
BETA battery handle	A-132.10.118		
BETA4 USB rechargeable handle with USB cord and plug-in power supply		A-132.27.388	A-132.28.388

Also available as a kit with EN 200 Wall Transformer (page 145)



Without case

Kit includes: BETA 200 F.O. Otolaryngoscope and BETA 200 Ophthalmoscope,
 1 set (4 pcs.) of reusable tips, 5 of both AllSpec disposable tips 2.5 and 4 mm Ø,
 one spare bulb each for XHL version.

	3.5V XHL	LED
2x BETA4 NT rechargeable handle with NT4 table charger	A-132.23.422	A-132.24.422

∴ For further information on the HEINE BETA 200 Ophthalmoscope, please see page 045.



HEINE K180 F.O. Otoscope

The standard, all around Fiber Optic Otoscope



Otoscope with Fiber Optic (F.O.) illumination constructed of light, high-impact polycarbonate.

- ∴ **Fiber Optic Illumination.** Ensures homogeneous, very bright illumination and an unobstructed view of the ear canal and tympanum.
- ∴ **Polycarbonate construction.** Shock-resistant.
- ∴ **XHL Xenon Halogen Technology.** Extremely bright, white light.
- ∴ **Acrylic viewing window with 3x magnification.** Sharply-focused distortion-free image.
- ∴ **Swivelling viewing window built into instrument.** Useful for instrumentation, cannot be mislaid.
- ∴ **Insufflation port.** Reliable test of tympanic mobility. See order information accessories on page 019.

HEINE K180 Diagnostic Sets/Kits

Set includes: K180 F.O. Otoscope,

1 set (4 pcs.) of reusable tips, soft pouch.



	2.5V XHL	3.5V XHL
BETA battery handle	B-181.10.118	
★ BETA4 USB rechargeable handle with USB cord and plug-in power supply		B-181.27.388
BETA4 NT rechargeable handle with NT4 table charger		B-181.23.420



Without case

NEW!

K180 F.O. Otoscope with	2.5V XHL	3.5V XHL
BETA battery handle	B-012.10.118	
BETA4 USB rechargeable handle with USB cord and plug-in power supply		B-012.27.388

Also available as a kit with EN 200 Wall Transformer (page 145)

Set includes: K180 F.O. Otoscope and K180 Ophthalmoscope,

1 set (4 pcs.) of reusable tips, hard case.



	2.5V XHL	3.5V XHL
BETA battery handle	A-279.10.118	
BETA4 USB rechargeable handle with USB cord and plug-in power supply		A-279.27.388
BETA4 NT rechargeable handle with NT4 table charger		A-279.23.420

∴ For further information on the HEINE K180 Ophthalmoscope, please see page 048.



HEINE mini 3000® F.O. Otoscope

Compact pocket otoscope with XHL or LED^{HQ} illumination

LED^{HQ}
LED NOW IN HEINE QUALITY.



Modern pocket otoscope with bright illumination and accurate colour rendering. Unique design, compact and powerful. Can only be used with the mini 3000 handle system. Available in black or blue.

Features for both instruments (XHL and LED):

- ⌘ **20,000 ON/OFF** switch cycles guaranteed.
- ⌘ **Distal Fiber Optic (F.O.) illumination:** Reflex-free illumination of tympanum and ear canal.
- ⌘ **Viewing window with 3x magnification and** optimized casing surface for razor-sharp images and minimal reflection. Swivelling viewing window built into instrument.
- ⌘ **Pneumatic testing** of tympanum mobility by using the insufflation port and an optional connector. See order information accessories on page 019.
- ⌘ **Attachment clip with integrated on/off switch.** Switches off automatically when returned to the pocket.
- ⌘ **Replaceable batteries.** Size AA, or optional rechargeable battery with mini NT table charger.*
- ⌘ **2-piece handle and head.** Easy to maintain, flexible.
- ⌘ **Award-winning design.** Maximum quality with minimum dimensions.

Special features of the LED instruments:

- ⌘ **Maintenance-free,** no need to ever exchange the LED.
- ⌘ LED thermal management for a **consistent light output throughout the whole working life.**
- ⌘ **There's LED. And there's LED^{HQ}.** HEINE has set a new standard which maintains that only the best is good enough, from the selection of materials to processing, from light intensity and thermal management to a colour rendering index as high as possible. **That's what we call LED in HEINE Quality – or LED^{HQ}.**
- ⌘ **Twice as bright as** Xenon Halogen instruments.
- ⌘ **Exclusive Battery Performance Indicator:** When the instrument is switched on, the maximum light intensity is shown, then the light intensity is regulated down to the level that corresponds to the current charge status of the battery so you know when your batteries need changing.
- ⌘ **Fade-Out Feature:** brightness reduces slowly even with low residual capacity, for even more efficient use of dry or rechargeable batteries.
- ⌘ **Operating time typ. 10 hours.** The batteries need to be changed less often and the rechargeable batteries last longer.



*To upgrade to a rechargeable instrument with mini NT table charger, please see page 148.



HEINE mini 3000 pocket instruments – a complete range of quality diagnostic instruments for your pocket. Available in black or blue. Please specify the colour you prefer when ordering. If not otherwise specified, we will supply black instruments.

HEINE mini 3000 F.O. Diagnostic Sets/Kits



[01]

Set/Kit includes: mini 3000 F.O. Otoscope,

1 set (4 pcs.) of reusable tips, 5 of both AllSpec disposable tips 2.5 and 4 mm Ø.
 Optionally with or without hard case.

	2.5V XHL	2.5V LED
mini 3000 battery handle with batteries, hard case [01]	D-851.10.021	D-885.20.021
mini 3000 battery handle with batteries, without case	D-001.70.120	D-008.70.120



[02]

Without case

Kit includes: mini 3000 F.O. Otoscope,

5 of both AllSpec disposable tips 2.5 and 4 mm Ø.



	2.5V XHL	2.5V LED
mini 3000 battery handle with batteries [02]	D-001.70.110	D-008.70.110
mini 3000 rechargeable handle (please order mini NT table charger separately)	D-001.70.301	D-008.70.301



Set includes: mini 3000 F.O. Ophthalmoscope and mini 3000 F.O. Otoscope,

1 set (4 pcs.) of reusable tips, 5 of both AllSpec disposable tips 2.5 and 4 mm Ø, hard case.

	2.5V XHL	2.5V LED
2 mini 3000 battery handles with batteries	D-873.11.021	D-886.11.021



Without case

Kit includes: mini 3000 F.O. Ophthalmoscope and mini 3000 F.O. Otoscope,

5 of both AllSpec disposable tips 2.5 and 4 mm Ø.

	2.5V XHL	2.5V LED
2 mini 3000 rechargeable handles and mini NT table charger	D-859.11.022*	D-860.11.022*

*with this Art. No. only available in black

∴ For further information on the HEINE mini 3000 Ophthalmoscope, please see page 050.



HEINE AllSpec® Disposable Tips



[01]



[02]



[03]

- For the most secure fit, best light transmission and hygiene, we recommend the use of HEINE Otoscope Tips.
- Assured quality. No sharp edges.

AllSpec Disposable tips (grey) for BETA 400, BETA 200, K180, mini 3000 F.O., mini 3000 Otoscopes

Pack of 1000 pcs. 2.5mm dia. (infants) [01]	B-000.11.128
Pack of 1000 pcs. 4mm dia. (adults) [01]	B-000.11.127
Dispenser pack, single, of 250 tips, 2.5mm dia (infants) [02]	B-000.11.153
Dispenser pack, single, of 250 tips, 4mm dia (adults) [02]	B-000.11.152
Case of 10 dispenser packs of 250 tips, 2.5mm dia (infants)	B-000.11.151
Case of 10 dispenser packs of 250 tips, 4mm dia (adults)	B-000.11.150

- AllSpec Tip dispenser incl. tips Ø 2.5mm and 4mm.
The right size, visible and instantly available. A clean new tip for each and every patient.

AllSpec Tip dispenser (2x 45 tips) [03]	B-000.11.149
---	--------------

⊗: Single use only.

Reusable Tips



2.4mm dia. 3mm dia. 4mm dia. 5mm dia.

- For the most secure fit, best light transmission and hygiene, we recommend the use of HEINE Otoscope Tips.
- Made of high-density SANALONS plastic with smooth external finish. Easy to clean. Common germicides can be used. Autoclavable at up to 134°C.
- Ergonomic shape. Painless atraumatic insertion.

Reusable tips (black)	1 piece	50 pieces
for BETA 400, BETA 200, K180, mini 3000 F.O., mini 3000 Otoscopes		
Reusable tip 2.4mm dia.	B-000.11.107	B-000.11.207
Reusable tip 3.0mm dia.	B-000.11.108	B-000.11.208
Reusable tip 4.0mm dia.	B-000.11.109	B-000.11.209
Reusable tip 5.0mm dia.	B-000.11.110	B-000.11.210

1 set = 4 pcs. reusable tips SANALONS 2.4/3/4/5mm dia.	B-000.11.111
--	--------------

Soft Disposable Tips



3mm dia. 5mm dia.

- Fits over the end of the tip to protect the auditory canal.

Soft disposable tips (black)

Soft disposable tip 3mm dia. 40 pcs./1 pack	B-000.11.141
Soft disposable tip 5mm dia. 40 pcs./1 pack	B-000.11.142

⊗: Single use only.



Further articles / Accessories

HEINE F.O. Otoscopes



BETA 400 F.O. Otoscope Head	2.5V XHL	3.5V XHL	LED
with 4 reusable tips, without handle	B-001.11.401	B-002.11.401	B-008.11.401
without handle and without accessories	B-001.11.400	B-002.11.400	B-008.11.400



BETA 200 F.O. Otoscope Head	2.5V XHL	3.5V XHL	LED
with 4 reusable tips, without handle	B-001.11.501	B-002.11.501	B-008.11.501
without handle and without accessories	B-001.11.500	B-002.11.500	B-008.11.500



K180 F.O. Otoscope Head	2.5V XHL	3.5V XHL
with 4 reusable tips, without handle	B-001.11.551	B-002.11.551
without handle and without accessories	B-001.11.550	B-002.11.550



mini 3000 F.O. Otoscope Head	2.5V XHL	2.5V LED
without handle and without accessories *	D-001.70.106	D-008.70.106

* Available in black or blue. Please specify the colour you prefer when ordering. If not otherwise specified, we will supply black instruments.



Spare bulb for BETA 400, BETA 200 and K180	2.5V XHL	3.5V XHL
XHL Xenon Halogen spare bulb	X-001.88.077	X-002.88.078



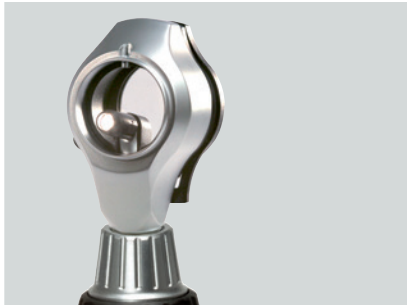
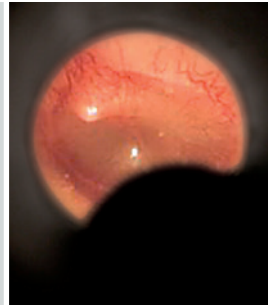
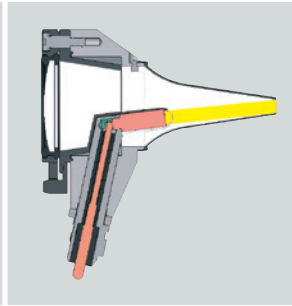
Spare bulb for mini 3000 F.O.	2.5V XHL
XHL Xenon Halogen spare bulb	X-001.88.105



Insufflation bulb for pneumatic testing	
Insufflation bulb for BETA 400, BETA 200 and K180 Otoscopes	B-000.11.240
Insufflation bulb for mini 3000 F.O. Otoscope with connector	D-000.80.102
Insufflation port connector for mini 3000 F.O. Otoscope	D-000.80.101



Bright XHL Xenon Halogen direct illumination.



HEINE BETA® 100 Diagnostic Otoscope

Diagnostic Otoscope with an all-metal housing



An otoscope with direct Xenon Halogen illumination in an elegant all-metal instrument head. For use with reusable specula or UniSpec disposable specula. With tip-adaptor it is also possible to use AllSpec disposable tips.

- ∴ **All-metal housing.** Exceptionally tough and durable.
- ∴ **Instrument head matt-black inside.** Eliminates reflexes.
- ∴ **XHL Xenon Halogen Technology.** Extremely bright, white light.
- ∴ **Large, scratch-resistant glass viewing window with 3x magnification.** Very sharp, distortion-free image.
- ∴ **Swivelling viewing window built into instrument.** Useful for instrumentation, cannot be mislaid.
- ∴ **Insufflation port.** Reliable test of tympanic mobility. See order information accessories on page 025.

HEINE BETA 100 Diagnostic Sets



Set includes: BETA 100 Diagnostic Otoscope,

1 set (6 pcs.) of reusable specula, 10 UniSpec disposable specula, 4 mm dia., spare bulb, hard case.

	2.5V XHL	3.5V XHL
BETA battery handle	B-236.10.118	
★ BETA4 USB rechargeable handle with USB Cord and plug-in power supply		B-236.27.388
BETA4 NT rechargeable handle with NT4 table charger		B-236.23.420

HEINE BETA 100 Diagnostic Sets/Kits



Without case

NEW! Kit includes: BETA 100 Diagnostic Otolaryngoscope,
10 UniSpec disposable specula, 4 mm dia.

	2.5V XHL	3.5V XHL
BETA battery handle	B-013.10.118	
BETA4 USB rechargeable handle with USB Cord and plug-in power supply		B-013.27.388



Set includes: BETA 100 Diagnostic Otolaryngoscope (XHL), BETA 200 Ophthalmoscope (XHL or LED), 1 set (6 pcs.) of reusable specula, 10 UniSpec disposable specula, 4 mm dia., one spare bulb each for XHL version, hard case.

	2.5V XHL	3.5V XHL	3.5V XHL/LED*
BETA battery handle	A-234.10.118		
BETA4 USB rechargeable handle with USB Cord and plug-in power supply		A-234.27.388	A-234.25.388
BETA4 NT rechargeable handle with NT4 table charger		A-234.23.420	A-234.25.420

*BETA 100 Otolaryngoscope with XHL illumination and BETA 200 LED Ophthalmoscope with LED illumination.

∴ **For further information on the HEINE BETA 200 Ophthalmoscope, please see page 045.**



HEINE K100 Diagnostic Otoscope

Diagnostic Otoscope with a high-impact polycarbonate housing



A very cost-effective diagnostic otoscope with direct Xenon Halogen illumination. The head is moulded in high-impact polycarbonate. For use with reusable specula or UniSpec disposable specula. With tip-adaptor it is also possible to use AllSpec disposable tips.

- ∴ **Polycarbonate construction.** Shock-resistant.
- ∴ **Instrument head matt-black inside.** Eliminates reflexes.
- ∴ **XHL Xenon Halogen Technology.** Extremely bright, white light.
- ∴ **Large acrylic viewing window with 3x magnification.** Sharply-focused distortion-free image.
- ∴ **Swivelling viewing window built into instrument.** Useful for instrumentation, cannot be mislaid.
- ∴ **Insufflation port.** Reliable test of tympanic mobility. See order information accessories on page 025.

HEINE K100 Diagnostic Sets/Kits



Set includes: K100 Diagnostic Otoscope,
1 set (6 pcs.) of reusable specula, spare bulb, soft pouch.

	2.5V XHL
BETA battery handle	B-237.10.118



Set includes: K100 Diagnostic Otoloscopy, 3 reusable specula, soft pouch.



	2.5V XHL	3.5V XHL
BETA battery handle	B-245.10.118	
BETA4 USB rechargeable handle with USB Cord and plug-in power supply		B-245.27.388
BETA4 NT rechargeable handle with NT4 table charger		B-245.23.420

NEW!

K100 Diagnostic Otoloscopy with	2.5V XHL
BETA battery handle	B-014.10.118

Without soft pouch



HEINE mini 3000® Otoscope

Compact pocket otoscope with direct illumination



Modern pocket otoscope in a unique, compact design. Can only be used with the mini 3000 handle system. Available in black or blue.

- ∴ **Instrument head matt-black inside.** Eliminates reflexes.
- ∴ **Enhanced XHL Xenon Halogen Technology with 100% more light compared with conventional bulbs.** Very bright, concentrated white light for perfect illumination.
- ∴ **2-piece handle and head.** Easy to maintain, flexible. Compatible with other mini 3000 instrument heads.
- ∴ **Viewing window with 3x magnification** and optimised casing surface for razor-sharp images and minimal reflection.
- ∴ **Swivelling viewing window built into instrument.** Useful for instrumentation, cannot be mislaid.
- ∴ **High-quality handle: Chrome-finished upper section/refined plastic.** Shockproof, sturdy, non-slip.
- ∴ **Attachment clip with integrated on/off switch.** Secure. Switches off automatically when returned to the pocket. 20,000 switch cycles guaranteed.
- ∴ **Replaceable batteries.** Size AA, or optional rechargeable battery with mini NT table charger*.



*To upgrade to a rechargeable instrument with mini NT table charger, please see page 148.

Available in black or blue. Please specify the colour you prefer when ordering. If not otherwise specified, we will supply black instruments.

HEINE mini 3000 Diagnostic Sets/Kits



[01]



[02]

Without case

Set/Kit includes: mini 3000 Otoscope,

1 set (4 pcs.) reusable tips, 5 each of 2.5 and 4 mm dia. AllSpec disposable tips.

	2.5V XHL
mini 3000 battery handle with batteries, hard case [01]	D-851.20.021
★ mini 3000 battery handle with batteries, without case [02]	D-001.70.220
mini 3000 battery handle with batteries, without case, without reusable tips	D-001.70.210

**Set includes: mini 3000 Otoscope, mini 3000 Ophthalmoscope,**

1 set (4 pcs.) reusable tips, 5 each of 2.5 and 4 mm dia. AllSpec disposable tips, hard case.

	2.5V XHL
2 mini 3000 battery handles with batteries	D-873.21.021

- ∴ **For further information on the HEINE mini 3000 Ophthalmoscope, please see page 050.**



HEINE UniSpec® Disposable Specula



- ∴ **Disposable.** Hygienic and safe.
- ∴ **Original HEINE design and manufacture.** Fit positively to the otoscope.
- ∴ **Assured quality.** No sharp edges.
- ∴ **A clean, new speculum for each and every patient.** The right size is visible and instantly available.

UniSpec Disposable Specula (grey) for BETA 100 and K100

Pack of 1000, 2.5 mm dia. (infants) 1000 pcs./1 pack	B-000.11.242
Pack of 1000, 4 mm dia. (adults) 1000 pcs./1 pack	B-000.11.241
UniSpec tip dispenser	B-000.11.146

⊗: Single use only.

Reusable Specula



- ∴ **Moulded in high-density SANALON S, smooth surface.** Easy to clean. Common germicides can be used. Autoclavable at up to 134°C.
- ∴ **Ergonomic Design.** Painless and atraumatic insertion.
- ∴ **Metal security lock with bayonet fitting.** Long-lasting, positive fit to the otoscope.

Reusable Specula (black) for BETA 100 and K100

1 set = 5 ear specula and 1 nose speculum	B-000.11.221
3 specula 3.5/4.5/5.5mm dia.	B-000.11.222
Ear speculum 2.2 mm dia.	B-000.11.215
Ear speculum 2.8 mm dia.	B-000.11.216
Ear speculum 3.5 mm dia.	B-000.11.217
Ear speculum 4.5 mm dia.	B-000.11.218
Ear speculum 5.5 mm dia.	B-000.11.219
Nose speculum 10 mm dia.	B-000.11.220

Further articles / Accessories

HEINE Otoscopes



BETA 100 Otoscope Head	2.5V XHL	3.5V XHL
with 6 reusable specula, without handle	B-001.11.527	B-002.11.527
without handle and without accessories	B-001.11.525	B-002.11.525



K100 Otoscope Head	2.5V XHL	3.5V XHL
with 3 reusable specula, without handle	B-001.11.576	B-002.11.576
without handle and without accessories	B-001.11.575	B-002.11.575



mini 3000 Otoscope Head	2.5V XHL
without handle and without accessories *	D-001.70.206

* Available in black or blue. Please specify the colour you prefer when ordering. If not otherwise specified, we will supply black instruments.



Spare bulb for BETA 100 and K100	2.5V XHL	3.5V XHL
XHL Xenon Halogen spare bulb	X-001.88.037	X-002.88.049



Replacement aperture cover for BETA 100 and K100	
Aperture cover for bulb, reduces reflexes	B-000.11.212



Spare bulb for mini 3000	2.5V XHL
XHL Xenon Halogen spare bulb	X-001.88.110



Tip Adaptor for BETA 100 and K100	
Adaptor for AllSpec disposable tips (p. 018) for use with diagnostic otoscope (BETA 100, K100)	B-000.11.306



Insufflation bulb for BETA 100 and K100	
Insufflation bulb for pneumatic testing	B-000.11.240

Tongue-Blade Holder

For wooden tongue-blades



Without case

- **XHL Xenon Halogen technology.** Concentrated illumination of oral cavity and pharynx.
- **Light-guide for bulb.** Avoids dazzle.

Tongue-Blade Holder with	2.5V XHL	3.5V XHL
BETA battery handle	B-015.10.118	
★ BETA4 USB rechargeable handle with USB Cord and plug-in power supply		B-015.27.388
BETA4 NT rechargeable handle (without NT4 table charger)		B-015.23.396

Tongue-Blade Holder

With blade ejector for use with HEINE disposable tongue-blades



Without case

- **XHL Xenon Halogen technology.** Concentrated illumination of oral cavity and pharynx.
- **Light-guide for bulb.** Avoids dazzle.
- **Blade ejector.** No need to touch used blades.
- **Only for HEINE disposable plastic tongue-blades.** Strong and hygienic.

Tongue-Blade Holder with	2.5V XHL	3.5V XHL
BETA battery handle	B-016.10.118	
★ BETA4 USB rechargeable handle with USB Cord and plug-in power supply		B-016.27.388
BETA4 NT rechargeable handle (without NT4 table charger)		B-016.23.396

HEINE mini 3000® Tongue-Blade Holder

With blade ejector for HEINE disposable tongue-blades



Without case

Can only be used with the mini 3000 handle system.

- **Finger-tip pressure releases the used blade.** No need to touch the blade after use.
- **XHL Xenon Halogen technology.** Concentrated illumination of oral cavity and pharynx.
- **Only for HEINE disposable tongue-blades.** Strong and hygienic.

mini 3000 Tongue-Blade Holder with	2.5V XHL
★ mini 3000 battery handle* and 5 disposable blades, with batteries	D-001.74.118

* Available in black or blue. Please specify the colour you prefer when ordering. If not otherwise specified, we will supply black instruments.



Further articles / Accessories

HEINE Tongue-Blade Holder

**Tongue-Blade Holder Head for wooden tongue-blades**

2.5V XHL

3.5V XHL

without handle and without accessories

B-001.12.302**B-002.12.302****Tongue-Blade Holder Head for disposable tongue-blades**

2.5V XHL

3.5V XHL

without handle and without accessories

B-001.12.305**B-002.12.305****mini 3000 Tongue-Blade Holder Head**

2.5V XHL

without handle and without accessories

D-001.74.100**Spare bulb for Tongue-Blade Holder**

2.5V XHL

3.5V XHL

XHL Xenon Halogen spare bulb

X-001.88.037**X-002.88.049****Replacement light-guide for Tongue-Blade Holder**

Light-guide for bulb

B-000.12.308**Spare bulb for mini 3000 Tongue-Blade Holder**

2.5V XHL

XHL Xenon Halogen spare bulb

X-001.88.037**Disposable plastic tongue-blades**

Pack of 100 disposable plastic tongue-blades

B-000.12.304



HEINE mini-c Clip Lamp

Compact, long-life pocket diagnostic light



[01]

[02]

Without case

Sturdy, long-life pocket diagnostic light in a compact, modern design with chrome head. Bright, concentrated light thanks to unique XHL Xenon Halogen lens-bulb. mini-c Clip Lamp only fits mini-c handles. The mini-c handle is not compatible with mini 3000 instruments. Handle available in black or blue.

- ∴ **Clip Lamp with ear light for otoplasty.** The ear light is used to ensure that hearing aids fit correctly.
- ∴ **Compact, oval, attractive light.** Lies ergonomically in the hand.
- ∴ **High-quality handle: Chrome-finish upper section/refined plastic.** Shockproof, sturdy, non-slip.
- ∴ **Attachment clip with integrated on/off switch.** Secure. Switches off automatically when replaced in the pocket. 20,000 switch cycles guaranteed.
- ∴ **Replaceable batteries.** Size AAA.
- ∴ **Registered design.**



mini-c Clip Lamp with	2.5V XHL
Batteries [01]	D-001.73.109
Ear light and batteries [02]	D-001.73.103

HEINE mini 3000® Clip Lamp

Compact, long-life pocket diagnostic light



[01]

[02]

Without case

Sturdy, long-life pocket diagnostic light in a compact, modern design with chrome head. Bright, concentrated light thanks to unique XHL Xenon Halogen lens-bulb. Can only be used with the mini 3000 handle system. Handle available in black or blue.

- ∴ **Compact, oval, attractive light.** Lies ergonomically in the hand.
- ∴ **2-piece handle and head.** Easy to maintain, flexible. Compatible with other mini 3000 instrument heads.
- ∴ **Enhanced XHL Xenon Halogen lens-bulb with 100 % more light compared to conventional bulbs.** Bright, focused light.
- ∴ **High-quality handle: Chrome-finish upper section/refined plastic.** Shockproof, sturdy, non-slip.
- ∴ **Attachment clip with integrated on/off switch.** Secure. Switches off automatically when replaced in the pocket. 20,000 switch cycles guaranteed.
- ∴ **Replaceable batteries.** Size AA, or optional rechargeable battery with mini NT table charger*.
- ∴ **Ear light for otoplasty [02].** The ear light is used to ensure that hearing aids fit correctly. See order information accessories on page 030.

mini 3000 Clip Lamp with	2.5V XHL
mini 3000 battery handle with batteries [01]	D-001.73.131



HEINE mini 3000 pocket instruments – a complete range of quality diagnostic instruments for your pocket. Available in black or blue. HEINE mini 3000 Clip Lamp and mini-c Clip Lamp attachments are only available with a chrome head. Please specify the colour you prefer when ordering. If not otherwise specified, we will supply black instruments.

HEINE mini 3000® Combi Lamp

Compact, all purpose illuminator with integrated tongue-blade holder



Without case

Sturdy, long-life pocket diagnostic light in a compact, modern design. Bright, concentrated light thanks to unique XHL Xenon Halogen lens-bulb.

Can only be used with the mini 3000 handle system. Available in black or blue.

- ∴ **Many applications.** Can be used as a general illuminator and as an illuminated tongue-blade holder for wooden blades and HEINE disposable blades.
- ∴ **2-piece handle and head.** Easy to maintain, flexible. Compatible with other mini 3000 instrument heads.
- ∴ **Enhanced XHL Xenon Halogen lens-bulb with 100% more light compared with conventional bulbs.** Bright, focused light.
- ∴ **High-quality handle: Chrome-finish upper section/refined plastic.** Shockproof, sturdy, non-slip.
- ∴ **Attachment clip with integrated on/off switch.** Secure. Switches off automatically when replaced in the pocket. 20,000 switch cycles guaranteed.
- ∴ **Replaceable batteries.** Size AA, or optional rechargeable battery with mini NT table charger*.

mini 3000 Combi Lamp with	2.5V XHL
mini 3000 battery handle with batteries and 5 disposable blades	D-001.76.120



*To upgrade to a rechargeable instrument with mini NT table charger, please see page 148.



Further articles / Accessories

HEINE pocket diagnostic lights

**mini 3000 Clip Lamp head**

2.5V XHL

without handle and without accessories

D-001.73.130**mini 3000 Combi Lamp head**

2.5V XHL

without handle and without accessories*

D-001.76.101

* Available in black or blue. Please specify the colour you prefer when ordering. If not otherwise specified, we will supply black instruments.

**Spare bulb for mini-c Clip Lamp**

2.5V XHL

XHL Xenon Halogen spare bulb

X-001.88.108**Spare bulb for mini 3000 Clip Lamp and Combi Lamp**

2.5V XHL

XHL Xenon Halogen spare bulb

X-001.88.107**Ear light for mini-c and mini 3000 Clip Lamp**

Ear light, 6 pieces in blister pack

D-000.73.105**Disposable tongue-blades for mini 3000 Combi Lamp**

Pack of 100 disposable tongue-blades

B-000.12.304