

# AcuPulse™ CO<sub>2</sub> Laser

with SurgiTouch™ Automation System



An Evolution in Automated Laser Surgery

# SurgiTouch™ Automation System

Automated and Robotic Laser Surgery

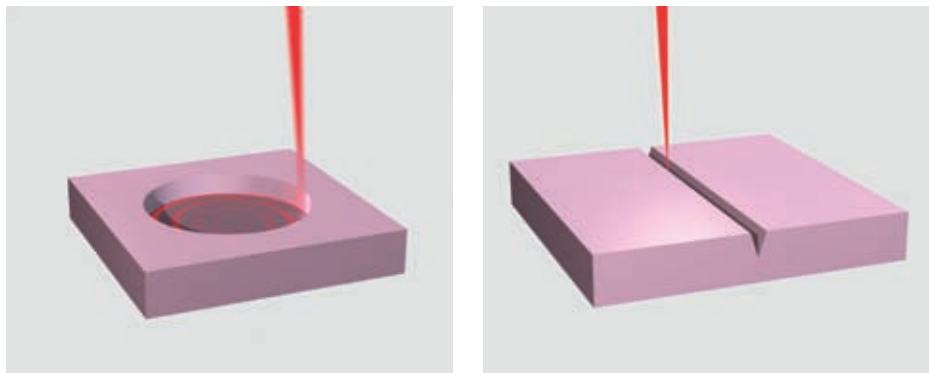


The AcuPulse CO<sub>2</sub> Laser with SurgiTouch automation system enables speed, precision and convenience levels unattainable by manual laser treatment

Application guided user interface. Select specialty and application

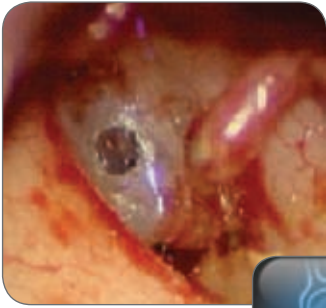


Automated ablation and incision through robotic SurgiTouch scanner

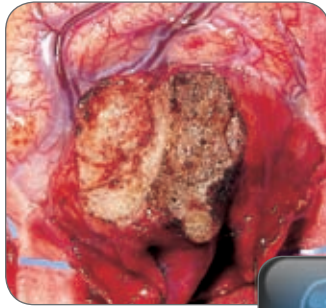


# Automated Laser Applications

A New Standard in Treatment Convenience



One-scan  
Stapedotomy



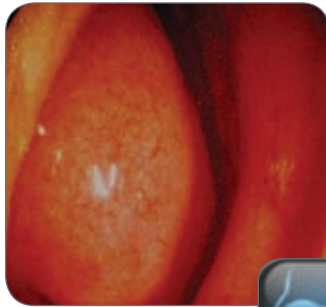
Neurosurgery



Laser Myringotomy



Laryngology



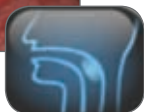
Turbinate Ablation



Scanning Colposcopy



Tonsil Ablation



Dermatology



Scanning Laparoscopy



Ask your Lumenis Representative about our comprehensive accessories for Aesthetic applications, like fractional skin resurfacing, etc.

# SurgiTouch Automation System

Focus on the Surgery, Not the Setup

Select the medical specialty and desired application and SurgiTouch goes to work:

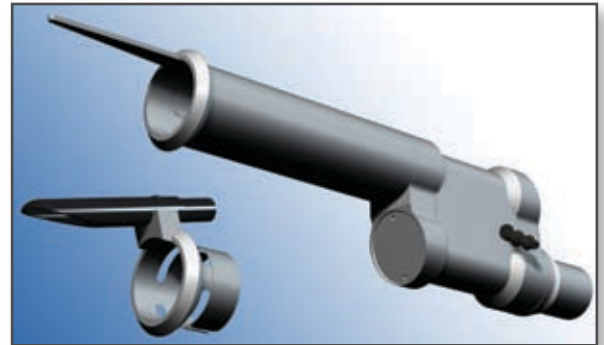
- Automatic laser delivery device suggestion
- Automatic laser treatment parameter recommendation
- Robotically assisted laser treatment



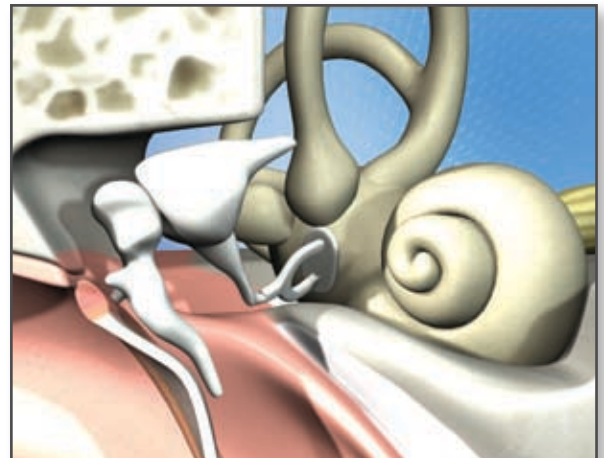
Personalized treatment data storage



Animated support video of accessory assembly



Animated support video of treatment \*\*



\*\* Available Fall 2009

## from Ease of Use to Joy of Use



### Convenient, Safe and Effective

- Reproducible and consistent treatment due to automation
- Robotic, computer controlled laser beam movement provides for unmatched precision
- Very brief laser-tissue interaction leads to minimal thermal damage
- Incision or ablation in 150 microns depth resolution steps
- Hand tremor impact eliminated
- Ideal teaching and training system

# AcuPulse with SurgiTouch

## An Evolution in Automated Laser Surgery

### Automated

SurgiTouch system provides for automated and robotic treatment execution. Unparalleled precision and reproducibility.

### Evolving

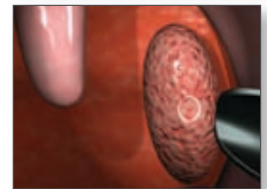
Built with the future in mind and upgradable in stages. Video user interface infinitely adaptable to new features.

### Valuable

An affordable system for multiple applications in Otolaryngology, Gynecology, Aesthetics, Neurosurgery and General Surgery.

### Educational

Integrated videos display assembly of accessories and basics of laser procedures. Largest network of laser courses and clinical support.



# AcuPulse

## Basic Laser System Provides an Economical Alternative

The basic AcuPulse system without SurgiTouch is an economic and ideal starting point for effective laser treatment across all surgical specialties. Through its vast range of accessories and upgrades, it is an ever evolving platform with numerous benefits for the physician:

- Compact size & cost effective
- Largest multi-disciplinary accessory assortment
- SuperPulse- Pulser- and CW operating modes offer adjustable thermal damage
- Storage of personalized laser treatment data
- Video tutorials demonstrating accessory assembly
- Personalized log-in allows to define preferred user interface screens and navigation
- Fully upgradeable to SurgiTouch automation system and other options available in the future
- Optional smart footswitch and remote control panel (Fall 2009)



### Proven Performance

AcuPulse succeeds the Compact product line from Lumenis, the world's most popular surgical CO<sub>2</sub> laser system. Although compact in size, it is a powerhouse of treatment versatility.

### Unmatched Range of Accessories:

- SurgiTouch automation system
- Digital AcuBlade microsurgery system
- AcuSpot 712 micromanipulator
- AcuSpot 712 L/Z large aperture micromanipulator
- Oral-Pharyngeal multi-application handpiece
- Laser bronchoscope
- Single/Second puncture laser laparoscope
- BeamAlign laparoscope laser coupler
- Skin resurfacing handpieces
- Incisional handpieces
- Fractional skin resurfacing scanner
- OtoScan ear aeration system
- Nasal & Laryngeal probes
- MicroSlad & ColpoSlad micromanipulators

# AcuPulse™ CO<sub>2</sub> Laser

## with SurgiTouch™ Automation System

### Lumenis Global Sales Offices

**Lumenis Inc.**  
Santa Clara, CA, USA  
Tel +1 408 764 3000  
+1 877 586 3647  
Fax +1 408 764 3999  
+1 800 505 1133

**Lumenis (GERMANY) GmbH**  
Dreieich-Dreieichenhain,  
Germany  
Tel +49 6103 8335 0  
Fax +49 6103 8335 300

**Lumenis (FRANCE) SARL**  
Orsay, France  
Tel +33 1 69 33 14 20  
Fax +33 1 60 19 57 23

**Lumenis (ITALY) Srl.**  
Formello (RM), Italy  
Tel +39 06 09 75 320  
Fax +39 06 09 75 320

**Lumenis (UK) Ltd.**  
London, UK  
Tel +44 20 8324 4200  
Fax +44 20 8324 4222

**Lumenis (JAPAN) Co. Ltd.**  
Tokyo, Japan  
Tel +81 3 5789 8300  
Fax +81 3 5789 8310

**Lumenis (CHINA) Ltd.**  
Beijing, China  
Tel +86 10 6510 2620  
Fax +86 10 6510 2621

Internet: [www.lumenis.com](http://www.lumenis.com)  
Email: [information@lumenis.com](mailto:information@lumenis.com)



### Technical Specifications

<b>AcuPulse Models</b>	30 / 40 / 30 ST / 40 ST (ST = with SurgiTouch system)			
<b>Laser Type</b>	CO <sub>2</sub> Laser, sealed-off, DC excited			
<b>Wavelength</b>	10.6 micron, infrared			
<b>Mode Structure</b>	TEM <sub>00</sub>			
<b>Laser Operating Modes</b>	Continuous Wave (CW), Pulsar, SuperPulse			
<b>CW Power</b>	1 – 30 W / 1 - 40 W			
<b>SuperPulse Average Power</b>	0.5 – 10 W / 0.5 - 15 W (Timed: 0.2 – 10 W / 0.2 – 15 W)			
<b>Pulsar Average Power</b>	1 – 25 W / 1 - 35 W			
<b>Tissue Exposure Modes (Model: AcuPulse 40 (30))</b>	Continuous:	Power (W) 1.0 – 4.5 5.0 – 40 (30)	On Time (sec) N.A.	Off Time (sec) N.A.
	Single pulse	1.0 – 4.5 5.0 – 40 (30)	0.05 – 1.00 0.01 – 1.00	N.A.
	Repeat pulse:	1.0 – 4.5 5.0 – 40 (30)	0.05 – 1.00 0.01 – 1.00	0.01 – 1.00 0.01 – 1.00
<b>Controls</b>	Multi-color touch panel – high resolution, footswitch			
<b>Aiming Beam</b>	5 mW red diode laser, 635 nm, adjustable intensity, blink on/off			
<b>Beam Delivery</b>	Lightweight, carbon fiber, 7-joint, spring balanced arm, 120 cm (47.2") reach, 360 deg. rotation			
<b>Memory Settings</b>	Min. 100			
<b>Cooling</b>	Self-contained, closed cycle			
<b>Electrical</b>	100 - 240 VAC, 10A (Max), 50/60 Hz			
<b>Dimensions</b>	37 cm W x 40 cm D x 119 cm H; (14.6" W x 15.8" D x 47" H)			
<b>Weight</b>	49 kg (108 lbs)			
<b>Standards</b>	CE, UL			

### For Models 30 ST / 40 ST (with SurgiTouch) only:

<b>Automated Specialties and Applications</b>	ENT	Tonsillectomy, LAUP, Bronchoscopy, Stapedectomy, Nasal Surgery, Larynx, Myringotomy
	GYN	Laparoscopy, Colposcopy, Free Hand
	Aesthetics	Skin Resurfacing (SilkTouch, FeatherTouch, Paint Mode), Blepharoplasty
	General Surgery	General, Proctology
	Neurosurgery	Microsurgery, Free Hand
<b>Feature</b>	<ul style="list-style-type: none"> <li>Automatic suggestion of accessory based on selected application</li> <li>Automatic suggestion of treatment parameters</li> <li>Robotically assisted laser treatment. User can overrule settings</li> </ul>	